

EASY ASSEMBLY, EASY TURN-OUT AND PERFECT DESIGN TO CREATE BEAUTIFUL BUCHES



**STAINLESS STEEL ROUND BUCHE CAKE MOLD**

For the baking of iced, entremets-style yule logs that can be cut to any length, in individual and 4, 6, 8 person portions. The small 1 1/8" (30mm) Ø can be used to make inserts for the 1 7/8" (45mm) or 2 1/3" (60mm) Ø. Can also be used to make roll-cakes or inserts for other preparations.

Item #	Ø"	L"
331052	1 1/8	22 1/4
331054	1 7/8	22 1/4
331056	2 1/3	22 1/4



- Easy to release from mold with the removable U-shaped fittings and the mold's natural widening.
- Assembly facilitated by its design.



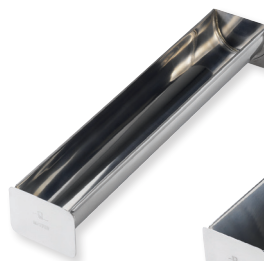
Designed by Bruno Pastorelli.



**EXOPAN STEEL NON-STICK BUCHE CAKE MOLD**

Fine steel with a non-stick coating inside and protective enamel outside. Edge rolled around a copper wire for ultimate heat distribution.

Item #	L"	W"	H"
340623	13 3/4	2 1/3	1 3/4
340624	19 2/3	2 1/3	1 3/4
340625	13 3/4	3 1/6	2 1/6
340626	19 2/3	3 1/6	2 1/6



340622



**STAINLESS STEEL BUCHE CAKE MOLD**

Stainless steel, sealed. Triangle shape.

Item #	L"	W"	H"	Wt	Shape
340622	19 3/4	3 1/2	3	2 lbs.	Triangle
340635	13 3/4	2 3/8	1 3/16	1 lb. 4 oz.	Round
340637	19 3/4	2 3/4	1 3/8	13 oz.	Round
340638	19 3/4	3 1/8	2 1/8	1 lb. 12 oz.	Round



**STAINLESS STEEL BUCHE CAKE COMB**

This comb is specially shaped to suit the 3 1/8" buche mold and helps to make a mousse-based or ice based double flavored buche that looks perfect when cut.



Item #	Wt oz.
341629	2

